

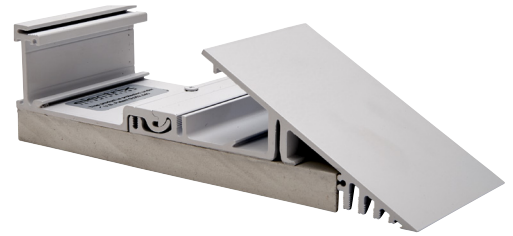
DATE \_\_\_\_\_ PROJECT \_\_\_\_\_ TYPE \_\_\_\_\_ QUANTITY \_\_\_\_\_

# LumiLedge® Prefabricated 8" Knife Edge Cove Framing

U.S. PAT. NO 9,062,840 B2

## FEATURES

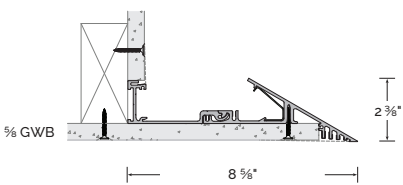
- Factory precise forms make installation more cost effective than field built knife edge coves
- Patented two-piece design allows for secure mounting and clean architectural reveal
- Framing factory finished in matte white powdercoat standard and in stock. Framing is field finished with wall board for exact match to wall surfaces
- Integrated LED luminaire options enable quick installation with exact aiming
- 2 3/8" high x 8" wide profile
- Field trimmable for exact wall fit
- Order inside corners, outside corners and knife profile finish caps for exposed end of run conditions separately



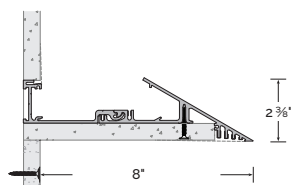
## ORDERING

K8-FR	22	
PRODUCT	CONFIGURATION	FINISH
<b>K8-FR</b> LumiLedge® Prefabricated 8" Knife Edge Cove Framing	<b>08</b> 8ft kit <b>40</b> 40ft kit <b>OC</b> Outside corner kit <b>IC</b> Inside corner kit <b>EC</b> End cap kit	<b>22</b> Matte white (standard)

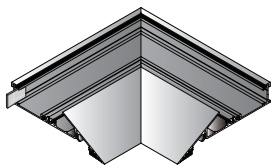
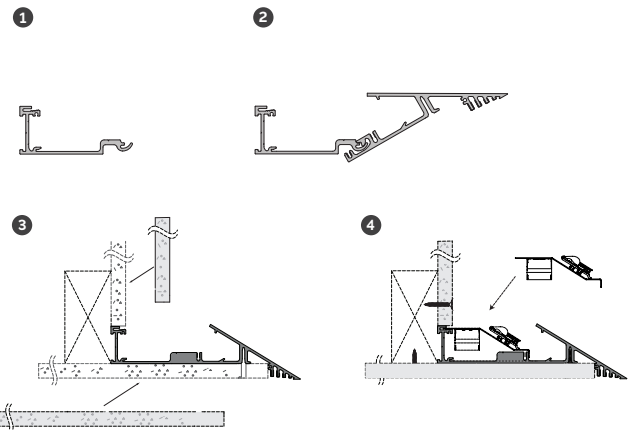
FLOATING CEILING:



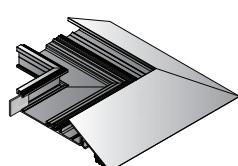
VERTICAL WALL:



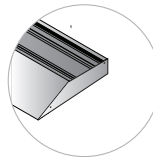
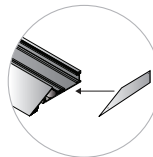
## INSTALLATION



Inside Corner:  
Knife Edge Extrusion



Outside Corner:  
Knife Edge Extrusion



NOTE: Endcaps are not reversible

**WARRANTY** 5 Year warranty visit [thelightingquotient.com](http://thelightingquotient.com) for details

